

*Inspiring innovation  
Inspirer l'innovation*

A faint, light gray world map is centered in the background of the slide.

# Connecting universities with industry and community partners

**Simon Bousquet, PhD**  
Director, Business Development  
Team Lead, Quebec and Atlantic Canada

[sbousquet@mitacs.ca](mailto:sbousquet@mitacs.ca)  
819-571-2936

# What is Mitacs?

- ➔ Not-for-profit organization, founded in 1999
- ➔ Establishing durable relationships between industry and academia
- ➔ Partnering with governments (federal, provincial), universities, companies, NFPs, crown corps, research networks
- ➔ Open to all graduate studies disciplines

*Developing the next generation of researchers and innovators for Canada's knowledge and innovation-based economy*



# Why Mitacs?

- ➔ National research network
- ➔ 17 years in operation
- ➔ 16,000+ research projects
- ➔ 65+ academic partners



# Mitacs by the Numbers



**\$113M**  
PRIVATE SECTOR INVESTMENT



**16000+**  
INNOVATIVE RESEARCH PROJECTS



**3100+**  
INDUSTRY PARTNERS



**40+**  
RESEARCH ORGANIZATION PARTNERS



**29000+**  
STUDENTS CAREER-READY



**2900+**  
INTERNATIONAL STUDENT  
RESEARCH INTERNSHIPS



**65+**  
UNIVERSITY PARTNERS



**1300+**  
PROFESSIONAL SKILLS WORKSHOPS

# The Mitacs network



- ✓ Computer science
- ✓ Engineering
- ✓ Anthropology
- ✓ Economics
- ✓ Chemistry
- ✓ Geography
- ✓ Health sciences
- ✓ Genetics
- ✓ Social work
- ✓ Forestry
- ✓ History
- ✓ Languages & linguistics
- ✓ Mathematics
- ✓ Business
- ✓ Education
- ✓ Interactive arts
- ✓ Psychology
- ✓ And more...

- **Small & medium business**
- **Large business**
- **Not-for-profit organizations**

# Mitacs program goals

- ➔ Support flexible, collaborative research projects
- ➔ Attract new funding
- ➔ Maintain high-quality research
- ➔ Support all disciplines
- ➔ Support international research collaborations in Canada and abroad
- ➔ Train graduates and postdocs for their careers



# Building research collaborations



- ➔ Research collaboration between university researchers and a Canadian partner org.
- ➔ All Canadian universities are eligible
- ➔ All university disciplines are eligible
- ➔ Grad students or postdoc, in 4-6 months internship units
  - + Partner + \$
  - + Prof
  - + Grad student/ postdoc
  - + Innovative/R&D/Research project



# Accelerate: funding scheme

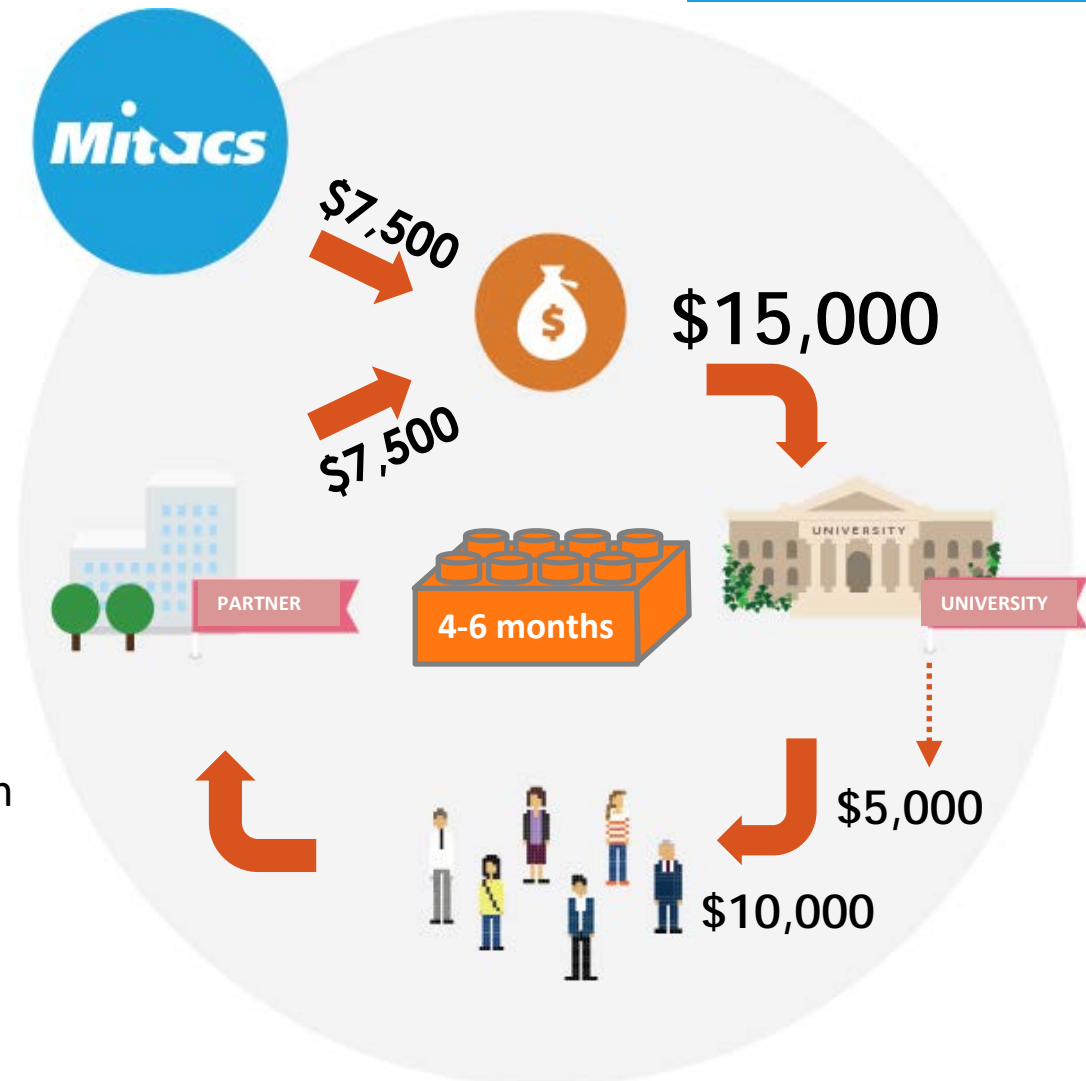
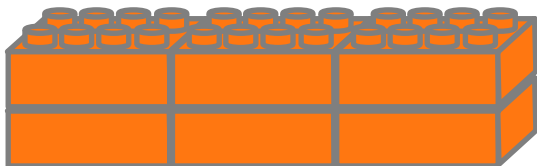


- ➔ The intern spends half the time with the partner organization (on-site or in the field)
- ➔ Grant to the university

Master, 2 units, \$30K



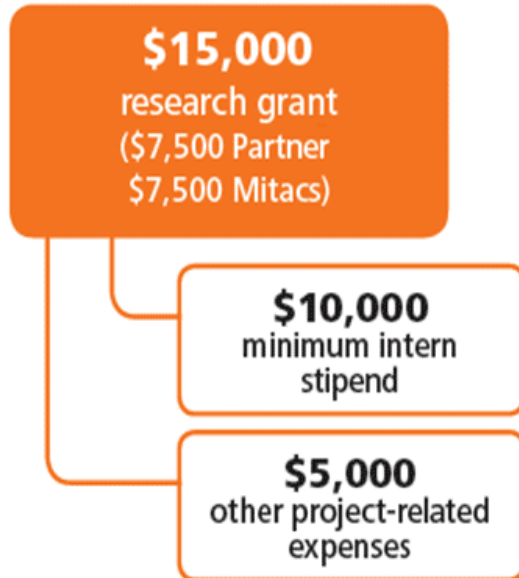
PhD and PDF, 6 units each, \$90K each



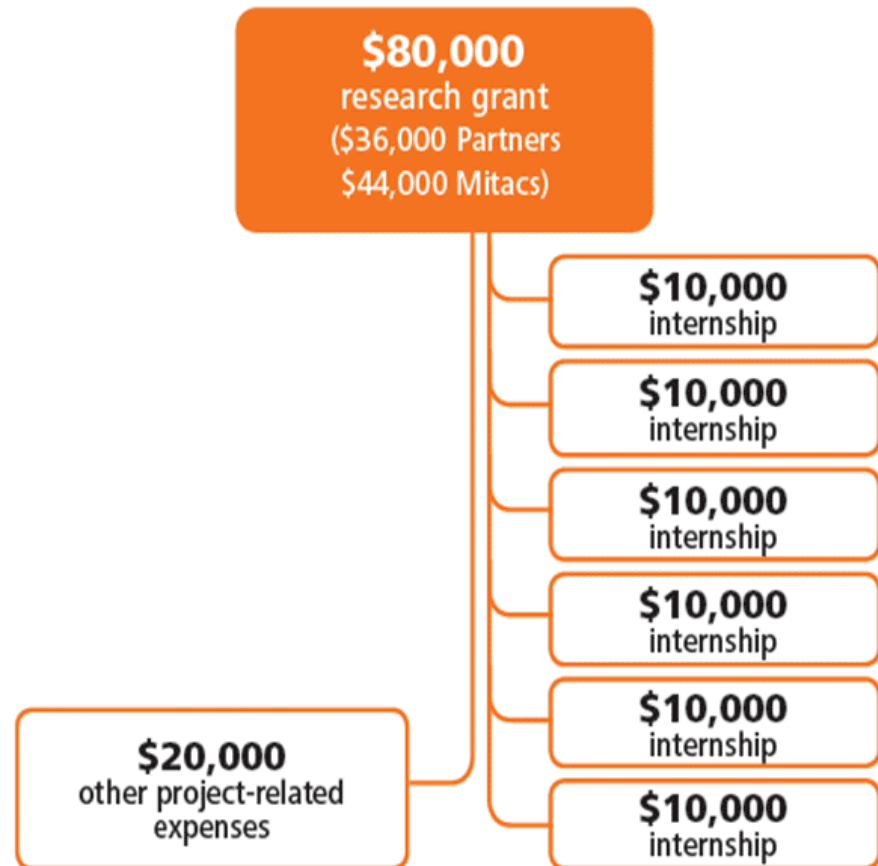


# Funding Model

## Standard



## Cluster: 6 or > internships & 3 or > interns



# Accelerate details

- ➔ Easy application
- ➔ Peer-reviewed
- ➔ Fast turnaround: 4-6 weeks
- ➔ High success rate
- ➔ Apply at any time!
- ➔ International students are eligible
- ➔ **Support from the business development team**



# Accelerate details

## Partner organizations:

- ➔ More competitive, recruitment opportunity
- ➔ Access expertise non available in-house
- ➔ Leverage R&D budgets
- ➔ Benefit from a national research network
- ➔ Interns are paid by the university, not on payroll

## Profs:

- ➔ Easy grants = diversify your research funding sources
- ➔ Establish partnerships
- ➔ Get feedback from your partners

## Students/interns:

- ➔ Award/fellowship = \$\$
- ➔ Real experience in your CV
- ➔ Experiential learning = soft skills



# Accelerate in numbers

In year 2016-2017, Mitacs Accelerate received:

- ➔ Almost 1100 projects
- ➔ 57 different universities across Canada (all provinces)
- ➔ 1023 different professors
- ➔ 1400+ supported students (MSc, PhD, PDF) = \$52M stipend
- ➔ 908 partner organizations
- ➔ Investments of \$32,4M from the private sector
- ➔ Over \$63M in grants in our universities

Discipline	Business	Computer Science	Earth Sciences	Engineering	Life Sciences	Mathematical Sciences	Physical Sciences	SSH
# app	71	94	79	413	224	28	37	129
%	7%	9%	7%	38%	21%	3%	3%	12%

# Projects examples

How to measure managers' efficacy

➔ USherbrooke, psychology, Harieka Groupe Conseil

Measuring what matters in education

➔ UofT, education, Directions Evidence and Policy Research Group

Risk rating enhancement for Vancity

➔ UBC, finance, Vancity Credit Union

Development of green carbons from biomass torrefaction

➔ Cape Breton University, chemistry, BW BioEnergy

Aviation engine testing cell training simulator

➔ University of Manitoba, mech eng, West Canitest R&D

Assembling a system for continuous production of carbon nanopearls

➔ Concordia, physics, Nanomed

## Benefits – longitudinal surveys

- ➔ 92% satisfaction rate amongst companies surveyed (2015)
  - 66% said projects results have been / will be commercialized
  - 36% had new or enhanced product development
  - 11% saw increased sales; 18% saw cost savings
  - 41% increased their R&D investments by \$10K-\$99K, 40% by over \$100K
  
- ➔ 96% satisfaction rate amongst former interns (2014)
  - 46% currently working in the private sector were hired by their partner
  - 19% of internships led to the creation of a new position at the company
  - Report suggests Accelerate creates 200 new R&D jobs annually

# Other programs



Mitacs  
Elevate

- ➔ Postdocs translate research into long-term business value for the partner
- ➔ Professional management training



Mitacs  
Step

- ➔ Professional development workshops include leadership, management, communications, relationship building, entrepreneurialism
- ➔ Taught by industry professionals

Pilot: **Canadian Science Policy Fellowship**: Sending PhD holders work with government entities to help them develop Canada's next policies → Science-based policy making

# Two-way research mobility





Our Funding Partners



Western Economic  
Diversification Canada

Diversification de l'économie  
de l'Ouest Canada

